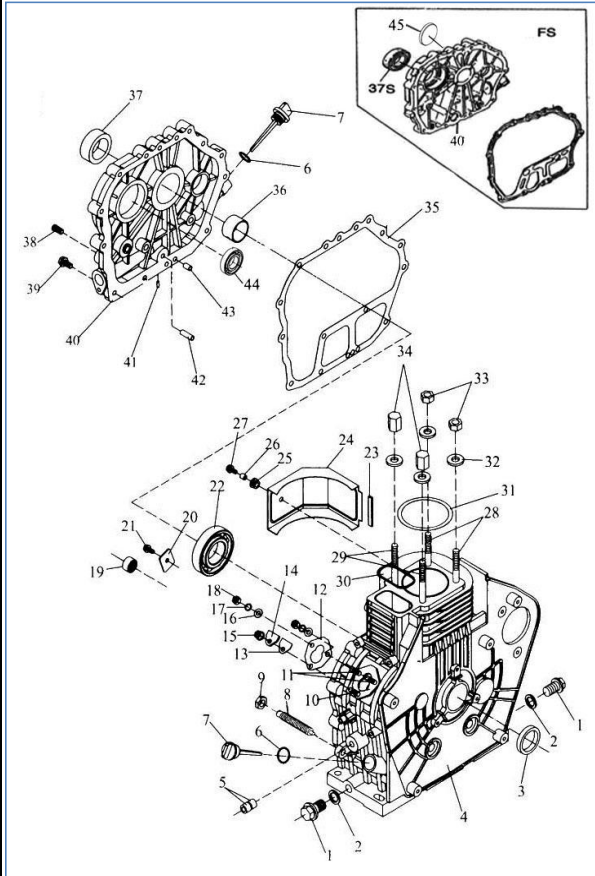


**Fig.1 Cylinder Block Assembly**

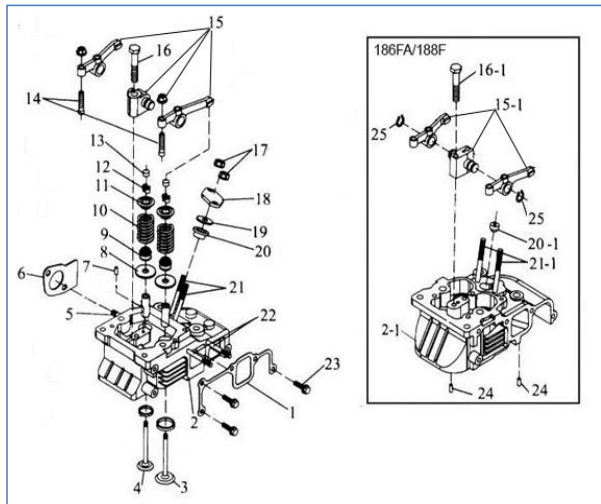
NO.	MODEL	English Description	Chinese Description	price(RMB)
1	170/178/186	Oil drain plug	放油螺塞	
2	170/178/186	Oil drain plug gasket	放油螺塞垫片	
3	170/178	Rear oil seal 30*45*8	油封SG35*45*8 (后)	
	186	Rear oil seal 35*50*8	油封SG35*50*8 (后)	
4	170	Cylinder block	170机体	
	173	Cylinder block	173机体	
	178	Cylinder block	178机体	
	186	Cylinder block	186机体	
	188	Cylinder block	188机体	
5	170/178/186	Needle bearing 7941/8	滚针轴承 7941/8	
6	170/178/186	O ring for oil dipstick 24*2.4	O型圈 24*2.4 (机油尺)	
7	170	Oil dipstick	170机油尺	
	178/186	Oil dipstick	178/186机油尺	
8	170/178	Fuel controller	170/178油量控制器部件	
	186	Fuel controller	186油量控制器部件	
9	170/178/186	Nut M10*1.25	螺母M10*1.25	
10	170/178/186	Fuel injection pump fastening bolt (short)	喷油泵紧固螺栓(短)	
11	170/178/186	Fuel injection pump fastening bolt (long)	喷油泵紧固螺栓(长)	
12	170/178/186	Fuel injector adjusting gasket	喷油泵垫片0.1	
	170/178/186	Fuel injector adjusting gasket	喷油泵垫片0.2	
	170/178/186	Fuel injector adjusting gasket	喷油泵垫片0.3	
	170/178/186	Fuel injector adjusting gasket	喷油泵垫片0.4	
	170/178/186	Fuel injector adjusting gasket	喷油泵垫片0.5	
13	170/178/186	Sealing plate gasket	密封板垫片	
14	170/178/186	Sealing plate	密封板	
15	170/178/186	Nut M6 (GB/T6177)	法兰面螺母M6	
16	170/178/186	Flat washer 6 (GB97.1)	平垫Φ6	
17	170/178/186	Spring washer 6 (GB/T93)	弹垫Φ6	
18	170/178/186	Heterotypic nut M6 (GB/T6170)	法兰面螺母M6	
19	170/178/186	Needle bearing 7941/15	滚针轴承 7941/15	
20	170/178/186	Thrust piece	止推片	
21	170/178/186	Flange face with bolts M8*12	法兰面螺栓M8*12	
22	170	Ball bearing 306 (GB/T276)	滚动轴承 6306	
	178	Ball bearing 307 (GB/T276)	滚动轴承 6307	
	186	Ball bearing 308 (GB/T276)	滚动轴承 6308	
23	178/186	Shock isolation piece of wind leading plate	减震垫条	
24	170	Wind leading plate	170引风板	
	178	Wind leading plate	178引风板	
	186	Wind leading plate	186引风板	
25	178/186	Pad	减震垫块	
26	178/186	Collar of Wind leading plate	衬套	
27	178/186	Bolt M6*18	异型螺栓M6*18	
28	170	Cylinder head bolts (short)	170气缸盖双头螺栓(短)	
	178	Cylinder head bolts (short)	178气缸盖双头螺栓(短)	
	186	Cylinder head bolts (short)	186气缸盖双头螺栓(短)	
29	170	Cylinder head bolts (long)	170气缸盖双头螺栓(长)	
	178	Cylinder head bolts (long)	178气缸盖双头螺栓(长)	
30	170	Rectangle ring gasket	矩形圈	
	173	Rectangle ring gasket	矩形圈	
	178	Rectangle ring gasket	矩形圈	
	186	Rectangle ring gasket	矩形圈	
	188	Rectangle ring gasket	矩形圈	
31	170	Cylinder head gasket	170气缸盖垫片0.2	
		Cylinder head gasket	170气缸盖垫片0.3	
		Cylinder head gasket	170气缸盖垫片0.4	
		Cylinder head gasket	170气缸盖垫片0.5	
		Cylinder head gasket	170气缸盖垫片0.6	
	178	Cylinder head gasket	178气缸盖垫片 0.2	
		Cylinder head gasket	178气缸盖垫片 0.3	
		Cylinder head gasket	178气缸盖垫片 0.4	
		Cylinder head gasket	178气缸盖垫片 0.5	
	186	Cylinder head gasket	178气缸盖垫片 0.6	
		Cylinder head gasket	186气缸盖垫片0.2	
		Cylinder head gasket	186气缸盖垫片0.3	
188	Cylinder head gasket	186气缸盖垫片0.4		
	Cylinder head gasket	186气缸盖垫片0.5		
	Cylinder head gasket	186气缸盖垫片0.6		
	Cylinder head gasket	188气缸盖垫片0.2		
32	170	Cylinder head gasket	188气缸盖垫片0.3	
		Cylinder head gasket	188气缸盖垫片0.4	
		Cylinder head gasket	188气缸盖垫片0.5	
		Cylinder head gasket	188气缸盖垫片0.6	
33	170	Cylinder head nut gasket	170气缸盖螺母垫片	
	178	Cylinder head nut gasket	178气缸盖螺母垫片	
	186	Cylinder head nut gasket	186气缸盖螺母垫片	
34	170	Cylinder head nuts (short)	170气缸盖螺母(短)	
	178	Cylinder head nuts (short)	178气缸盖螺母(短)	
	186	Cylinder head nuts (short)	186气缸盖螺母(短)	
35	170	Cylinder head nuts (long)	170气缸盖螺母(长)	
	178	Cylinder head nuts (long)	178气缸盖螺母(长)	
	186	Cylinder head nuts (long)	186气缸盖螺母(长)	
36	170	Crankcase cover gasket	170曲轴箱盖垫片	



35	173	Crankcase cover gasket	173曲轴箱盖垫片	
	178	Crankcase cover gasket	178曲轴箱盖垫片	
	186	Crankcase cover gasket	186曲轴箱盖垫片	
36	170	Main Bushing	170主轴瓦	
	178	Main Bushing	178主轴瓦	
	186	Main Bushing	186主轴瓦	
37	170	Front oil seal 25×42×10	油封 25X42X10 (前)	
	178	Front oil seal 30×45×10	油封 30X45X10 (前)	
	186	Front oil seal 35×50×10	油封 35X50X10 (前)	
37S	170FS	Front side oil seal	油封 25X42X10(FS)	
	178FS	Front side oil seal	油封 30X45X10(FS)	
	186FS	Front side oil seal	油封 35X50X10(FS)	
38	170/178/186	Inner Hexagon Plug G1/8"	内六角堵塞	
39	170	Anti-loosing Bolt M6×25	法兰螺栓 M6*25	
	173/178/186	Anti-loosing Bolt M8×33.5	法兰螺栓 M8*33.5	
40	170	Crankcase cover	170曲轴箱盖	
	173	Crankcase cover	173曲轴箱盖	
	178	Crankcase cover	178曲轴箱盖	
	186	Crankcase cover	186曲轴箱盖	
	170FS	Crankcase cover	170FS曲轴箱盖	
	178FS	Crankcase cover	178FS曲轴箱盖	
41	170/178/186	Aluminum Plug φ8×8	堵塞	
42	170/178/186	Oil guide	进油导管	
43	170/178/186	Retaining pin 8×12 (GB119-2001)	销 8×12	
	170	Bearing 205 (GB/T276)	滚动轴承205	
44	178	Bearing 206 (GB/T276)	滚动轴承206	
	186	Bearing 207 (GB/T276)	滚动轴承207	
	170FS	Block	170FS闷盖	
45	178FS	Block	178FS闷盖	
	186FS	Block	186FS闷盖	

**Fig.2 Cylinder Head Assembly**

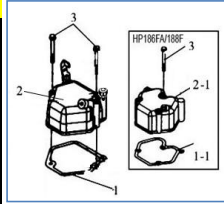
NO.	MODEL	English Description	Chinese Description	price(RMB)
1	170	Intake pipe gasket	170进气管垫片	
	178	Intake pipe gasket	178进气管垫片	
	186	Intake pipe gasket	186进气管垫片	
2	170	Cylinder Head	170气缸盖部件	
	173	Cylinder Head	173气缸盖部件	
	178	Cylinder Head	178气缸盖部件	
	186	Cylinder Head	186气缸盖部件	
	186FA	Cylinder Head	186FA气缸盖部件	
3	170	Intake valve	170进气门	
	173	Intake valve	173进气门	
	178	Intake valve	178进气门	
	186	Intake valve	186进气门	
	188	Intake valve	188进气门	
4	170	Exhaust valve	170排气门	
	173	Exhaust valve	173排气门	
	178	Exhaust valve	178排气门	
	186	Exhaust valve	186排气门	
	188	Exhaust valve	188排气门	
5	170/178/186	Double ended stud AM8×36 (GB899)	双头螺栓AM8*20	
6	170/178	Muffler gasket	170/178消声器垫片	
	186	Muffler gasket	186消声器垫片	
7	170/178/186	Pin 4×8 (GB119)	销 4X8	
8	170	Valve spring washer	170气门弹簧垫片	
	178	Valve spring washer	178气门弹簧垫片	
	186	Valve spring washer	186气门弹簧垫片	
9	170	Valve Conduit Oil Seal	170气门导管油封	
	178	Valve Conduit Oil Seal	178气门导管油封	
	186	Valve Conduit Oil Seal	186气门导管油封	
10	170	Valve spring	170气门弹簧	
	178	Valve spring	178气门弹簧	
	186	Valve spring	186气门弹簧	
11	170	Valve spring seat	170气门弹簧座	
	178	Valve spring seat	178气门弹簧座	
	186	Valve spring seat	186气门弹簧座	
12	170	Valve clip	170气门锁夹	
	178	Valve clip	178气门锁夹	
	186	Valve clip	186气门锁夹	
13	170	Adjusting valve spacer	170气门调节垫块	
	178	Adjusting valve spacer	178气门调节垫块	
	186	Adjusting valve spacer	186气门调节垫块	
14	170/178	Valve clearance adjusting screw	170/178气门间隙调节螺钉	
	186	Valve clearance adjusting screw	186气门间隙调节螺钉	
15	170/178	Valve rocker arm assembly	170/178摇臂总成	
	186	Valve rocker arm assembly	186气门摇臂总成	
15-1	186FA/188	Exhaust valve rocker arm	186FA/188气门摇臂总成	
16	170/178	Rocker arm shaft fastening bolt	异型螺栓 M8X45	
	186	Rocker arm shaft fastening bolt	186摇臂支座紧固螺栓	
16-1	186FA/188	Rocker arm shaft fastening bolt	异型螺栓 M8X45	
17	170/178/186	Nut M6 (GB6177)	异型螺母 M6	
18	170/178/186	Fuel injector pressure plate	喷油器压板	
19	170/178/186	Heat Insulator Gasket	隔热套垫圈	



20	170/178/186	Heat Insulator	隔热套	
20-1	186FA	Heat Insulator	隔热套	
21	170/178/186	Double ended bolt AM6*50 (GB900)	双头螺栓 M6X50	
21-1	186FA	Double ended bolt AM6*55 (GB900)	双头螺栓 M6X55	
	188	Double ended bolt AM6*32 (GB900)	双头螺栓 M6X42	
22	170/178	Double ended bolt AM6* 55 (GB900)	双头螺栓 M6X55	
	186	Double ended bolt AM6*75 (GB900)	双头螺栓 M6X75	
23	170/178/186	Heterotypic bolt M6*25 (GB5789)	异型螺栓 M6X25	
24	186FA/188	Pin 4*8 (GB119)	销 4X8	
25	186FA/188	Retainer ring 15 (GB894.1)	挡圈15	

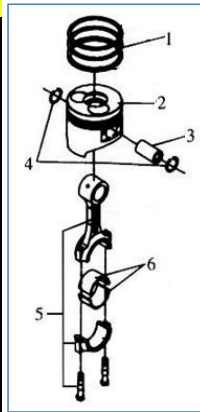
**Fig.3 Cylinder Head Cover Assembly**

NO.	MODEL	English Description	Chinese Description	price(RMB)
1	170/178	Cylinder head cover gasket	170/178气缸盖罩垫片	
	186	Cylinder head cover gasket	186气缸盖罩垫片	
1-1	186FA/188	Cylinder head cover gasket	186FA/188气缸盖罩垫片	
2	170/178	Cylinder head cover assembly	170/178气缸盖罩总成	
	186	Cylinder head cover assembly	186气缸盖罩总成	
2-1	186FA/188	Cylinder head cover assembly	186FA/188气缸盖罩总成	
10	170/178	M6* 55 Flanged Bolt (GB5789)	异型螺栓 M6X55	
	186	M6*70 Flanged Bolt (GB5789)	异形螺栓 M6X70	



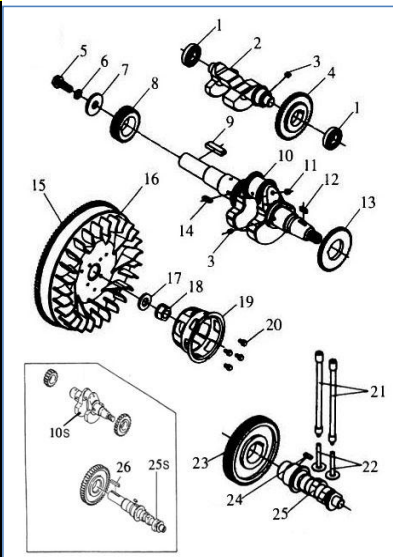
**Fig.4 Cylinder Head Cover Assembly**

NO.	MODEL	English Description	Chinese Description	price(RMB)
1	170	Air Ring Assem.	170活塞环组件	
	178	First Air Ring	178活塞环组件	
	186	First Air Ring	186活塞环组件	
	188	First Air Ring	188活塞环组件	
2	170	Piston	170活塞	
	178	Piston	178活塞	
	186	Piston	186活塞	
	186FA	Piston	186FA活塞	
	188	Piston	188活塞	
	170FS	Piston	170FS活塞	
3	170	Piston pin	170活塞销	
	178	Piston pin	178活塞销	
	186	Piston pin	186活塞销	
	188	Piston pin	188活塞销	
4	170	Retainer clip of Piston pin φ19	挡圈19	
	178	Retainer clip of Piston pin φ21	挡圈21	
	186	Retainer clip of Piston pin φ23	挡圈23	
5	170	Connecting rod body	170连杆总成	
	178	Connecting rod body	178连杆总成	
	186	Connecting rod body	186连杆总成	
	188	Connecting rod body	188连杆总成	
6	170	Connecting rod bush	170连杆轴瓦 (铜合金)	
	178	Connecting rod bush	178连杆轴瓦 (铜合金)	
	186	Connecting rod bush	186连杆轴瓦 (铜合金)	



**Fig.5 Crankshaft & Flywheel Assembly**

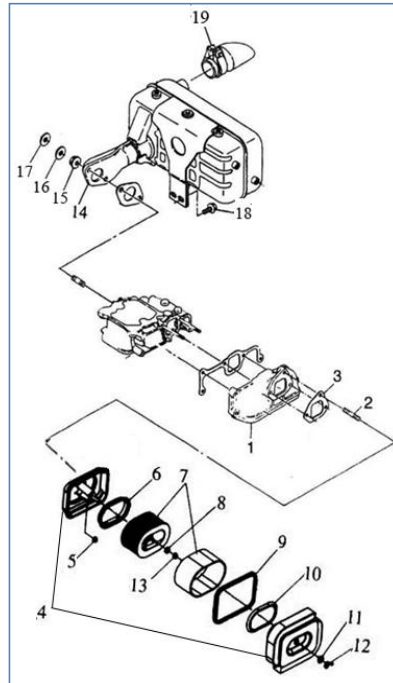
NO.	MODEL	English Description	Chinese Description	price(RMB)
1	170/178	Bearing 202 (GB/T276)	滚动轴承 6202	
	186	Bearing 203 (GB/T276)	滚动轴承 6203	
2	170	Balancing Shaft	170平衡轴	
	178	Balancing Shaft	178平衡轴	
	186	Balancing Shaft	186平衡轴	
3	170/178/186	Key 5*7 (GB1096)	键 5X7 (扁平)	
4	170	Balancing Shaft Timing Gear	170平衡轴正时齿轮	
	178	Balancing Shaft Timing Gear	178平衡轴正时齿轮	
	186	Balancing Shaft Timing Gear	186平衡轴正时齿轮	
5	170/178/186	Output End Set Bolt	法兰螺栓M8*25	
6	170/178/186	Spring Gasket	弹垫圈8	
7	170/178/186	Flat Gasket	平垫圈8	
8	170	Crankshaft timing gear	170曲轴正时齿轮	
	178	Crankshaft timing gear	178曲轴正时齿轮	
	186	Crankshaft timing gear	186曲轴正时齿轮	
9	170	Key 5*48(GB1096)	键 5X30	
	178/186	Key 6*63 (GB1096)	键 6X50	
10	170	Crankshaft	170曲轴	
	173	Crankshaft	173曲轴	
	178	Crankshaft	178曲轴	
	186	Crankshaft	186曲轴	
	186FA	Crankshaft	186FA曲轴	
	188	Crankshaft	188曲轴	
10S	170FS	Crankshaft	170FS曲轴	
	178FS	Crankshaft	178FS曲轴	
	186FS	Crankshaft	186FS曲轴	
11	170/178/186	Plug6.35	钢珠	
12	178	Key 5*12 (GB1096)	键 5X12	
	170/186	Key 5*14 (GB1096)	键 5X14	
13	170	Balancing Shaft Driving Gear	170平衡轴传动齿轮	
	178	Balancing Shaft Driving Gear	178平衡轴传动齿轮	
	186	Balancing Shaft Driving Gear	186平衡轴传动齿轮	
14	170/178/186	Key 5*12 (GB1096)	键 5X12	



15	170	Flywheel gear ring (for electric starter)	170飞轮齿圈	
	178	Flywheel gear ring (for electric starter)	178飞轮齿圈	
	186	Flywheel gear ring (for electric starter)	186飞轮齿圈	
	170FS	Flywheel gear ring (for electric starter)	170FS飞轮齿圈	
	178FS	Flywheel gear ring (for electric starter)	178FS飞轮齿圈	
	186FS	Flywheel gear ring (for electric starter)	186FS飞轮齿圈	
16	170	Flywheel	170飞轮	
	178	Flywheel	178飞轮	
	186	Flywheel	186飞轮	
	188	Flywheel	188飞轮	
17	170/178	Flywheel nut gasket	170/178飞轮螺母垫圈	
	186	Flywheel nut gasket	186飞轮螺母垫圈	
18	170/178	Nut flywheel	170/178飞轮螺母	
	186	Nut flywheel	186飞轮螺母	
19	170	Starter	170起动爪盘	
	178	Starter	178起动爪盘	
	186	Starter	186起动爪盘	
	188	Starter	188起动爪盘	
20	170/178/186	Bolt M6×12	法兰螺栓M6*12	
21	170	Push rod	170气门推杆	
	178	Push rod	178气门推杆	
	186	Push rod	186气门推杆	
22	170/178	Tappet	170/178气门挺柱	
	186	Tappet	186气门挺柱	
23	170	Camshaft timing gear	170凸轮轴正时齿轮	
	178	Camshaft timing gear	178凸轮轴正时齿轮	
	186	Camshaft timing gear	186凸轮轴正时齿轮	
24	170/186	Key 5×14 (GB1096)	键 5X14	
	178	Key 4×12 (GB1096)	键 4X12	
25	170	Camshaft	170凸轮轴	
	173	Camshaft	173凸轮轴	
	178	Camshaft	178凸轮轴	
	186	Camshaft	186凸轮轴	
	186FA	Camshaft	186FA凸轮轴	
25S	170FS	Camshaft	170FS凸轮轴	
	178FS	Camshaft	178FS凸轮轴	
	186FS	Camshaft	186FS凸轮轴	
26	170/178/186	Key 8×40 (GB1096)	键8*40	

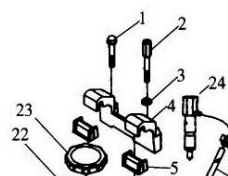
**Fig.6 Air Intake & Muffler Assembly**

NO.	MODEL	English Description	Chinese Description	price(RMB)
1	170	Intake pipe	170进气管	
	178	Intake pipe	178进气管	
	186	Intake pipe	186进气管	
2	170/178	fasten bolt for air cleaner	170/178空滤紧固螺栓	
	186	fasten bolt for air cleaner	186空滤紧固螺栓	
3	170/178	Air cleaning gasket	170/178空滤垫片	
	186	Air cleaning gasket	186空滤垫片	
4	170/178	Bottom case assembly of Air Cleaner	170/178空气滤清器部件	
	186	Bottom case assembly of Air Cleaner	186空气滤清器部件	
5	170/178/186	Heterotypic Nut M6 (GB6177)	异型螺母 M6	
6	170/178	Sealing ring II of shock proof	170/178空滤防震密封垫(II)	
	186	Sealing ring II of shock proof	186空滤防震密封垫(II)	
7	170/178	Air filter element	170/178空滤芯	
	186	Air filter element	186空滤芯	
8	170/178/186	Shockproof Unit	防震件	
9	170/178	Sheet Gasket	170/178空滤密封圈	
	186	Sheet Gasket	186空滤密封圈	
10	170/178	Sealing ring I of shock proof	170/178空滤防震密封垫(I)	
	186	Sealing ring I of shock proof	186空滤防震密封垫(I)	
11	170/178	Air filter shock absorber	170/178空滤防震件	
	186	Air filter shock absorber	186空滤防震件	
12	170/178	Butterfly nut M6	蝶形螺母M6	
	186	Butterfly nut M8	蝶形螺母M8	
13	170/178	Nut M6	螺母M6	
	186	Nut M8	螺母M8	
14	170	Muffler assembly	170消声器总成	
	178	Muffler assembly	178消声器总成	
	186	Muffler assembly	186消声器总成	
15	170/178/186	Flat washerφ8	平垫 8	
16	170/178/186	Spring washerφ8	弹垫8	
17	170/178/186	Nut M8 (GB61706)	螺母M8	
18	170	Heterotypic Bolt M6x14 (GB5789)	异型螺栓 M6X14	
	178/186	Heterotypic Bolt M8x16 (GB5789)	异型螺栓 M8*16	
19	170/178	Muffler tail pipe	170/178消声器弯头	
	186	Muffler tail pipe	186消声器弯头	



**Fig.7 Fuel System**

NO.	MODEL	English Description	Chinese Description	price(RMB)
1	170/178/186	Bolt M8×45 (GB5789)	异型螺栓 M8X45	
2	170/178/186	Upper fuel tank bracket fastening bolt	油箱上支架紧固螺栓	
3	170/178/186	Flat washer 8 (GB97.1)	平垫 φ8	
4	170	Upper fuel tank bracket	170油箱上支架	
	178	Upper fuel tank bracket	178油箱上支架	
	186	Upper fuel tank bracket	186油箱上支架	
5	170/178/186	Shock absorbing pad of fuel tank	油箱减振垫	



6	170/178/186	Fuel leak-off Pipe	回油管	
7	170/178/186	Fuel leak-off pipe connecting9	回油管卡箍9	
8	170/178/186	Fuel drain gasket	油箱放油螺栓垫片	
9	170/178/186	Fuel drain plug(in the fuel tank)	油箱放油螺栓	
10	170/178/186	Lower fuel tank bracket	油箱下支架	
11	170/178/186	Bolt M6×14	异型螺栓 M6X14	
12	170/178/186	Nut M6 (GB6177)	异型螺母 M6	
13	170/178/186	Fuel tank cock assembly	油箱开关	
14	170/178/186	Gasket of fuel tank cock	油箱开关垫片	
15	170/178/186	Fuel oil pipe	输油管	
16	170/178/186	Fuel pipe clamp13	输油管卡箍13	
17	170/178/186	Fuel filter gasket	柴油滤垫片	
18	170	Fuel filter element	170柴油滤芯部件	
	178	Fuel filter element	178柴油滤芯部件	
	186	Fuel filter element	186柴油滤芯部件	
19	170/178	Fuel injector pump	170/178喷油泵	
	186	Fuel injector pump	186喷油泵	
	186FA	Fuel injector pump EPA type	186FA喷油泵	
	170	High pressure fuel pipe	170高压油管	
20	178	High pressure fuel pipe	178高压油管	
	186	High pressure fuel pipe	186高压油管	
	170	Fuel Tank	170油箱	
21	178	Fuel Tank	178油箱	
	186	Fuel Tank	186油箱	
	170/178/186	Fuel oil filter	加油滤网杯	
22	170/178/186	Fuel tank cap assembly	油箱盖	
24	170/178	Injector	170/178喷油器	
	173	Injector	173喷油器	
	186	Injector	186喷油器	
	186FA	Injector	186FA喷油器	
	188	Injector	188喷油器	

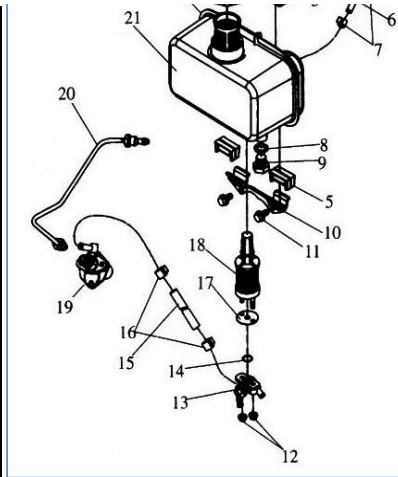


Fig.8 Lubrication and speed control system					
NO.	MODEL	English Description	Chinese Description	price(RMB)	
1	170/178/186	Heterotypic Bolt M6×12	异型螺栓 M6X12		
2	170/178/186	Oil pump cover	机油泵盖板		
3	170/178/186	O ring 34.5×1.8 (GB3452.1)	O型圈 34.5X1.8		
4	170/178	Oil Pump	170/178机油泵		
	186	Oil Pump	186机油泵		
5	170/178/186	pin 3×16 (GB119)	销 3X16		
6	170/178/186	Heterotypic Bolt M6×14 (GB5789)	异型螺栓 M6X14		
7	170/178/186	Oil filter cleaning element	机油滤清器		
8	170/178/186	Seal ring 25×2.4	O型圈25×2.4		
9	170	Oil pump driving gear	170机油泵传动齿轮总成		
	178/186	Oil pump driving gear	178/186机油泵传动齿轮总成		
10	170/178/186	Fly block pin	飞锤销		
11	170/178/186	Fly block	飞锤		
12	170/178/186	Governor fork tappet	调速器推盘		
13	170/178/186	Lever shaft gasket	杠杆轴垫片		
	170	Fork lever assembly	拨叉杆总成		
	178	Fork lever assembly	拨叉杆总成		
	186	Fork lever assembly	拨叉杆总成		
15	170/178/186	Washer	杠杆轴油封		
16	170/178/186	Handle bracket	普通手柄总成		
17	170/178/186	Speed-control lever	手柄调速杆		
18	170/178/186	Heterotypic Bolt M6×14 (GB5789)	异型螺栓 M6X14		
19	170/178/186	Heterotypic Bolt M6×14 (GB5789)	异型螺栓 M6X14		
20	170/178/186	Return spring II	回位弹簧(II)		
21	170/178/186	Return spring I	回位弹簧(I)		
	170	Speed-control spring	调速弹簧		
	22	178	Speed-control spring	调速弹簧	
		186	Speed-control spring	调速弹簧	

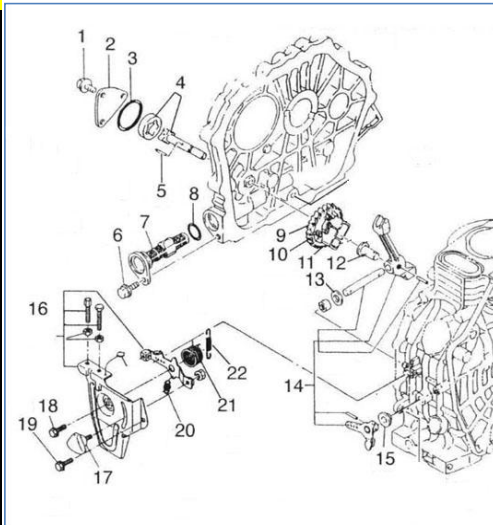
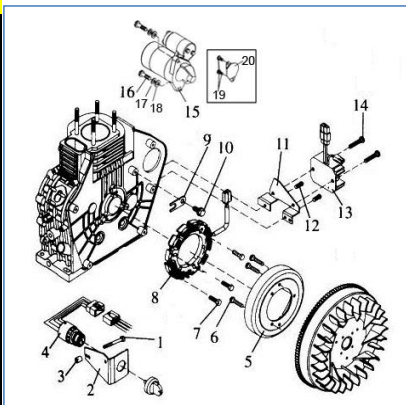


Fig.9 Starting Motor & Flywheel Alternator Assembly				
NO.	MODEL	English Description	Chinese Description	price(RMB)
1	170/178/186	Bolt M6×85	螺栓M6*85	
2	170/178/186	Switch Board of Electric Starter	电门锁支架	
3	170/178/186	Collar of Wind leading plate	导风罩衬套	
4	170/178/186	Starting Key Assem.	电门锁六孔	
5	170/178/186	Rotator Assem.	转子部件	
6	170/178/186	countersunk screw M6×14	沉头螺钉 M6x14	
7	170/178/186	Heterotypic bolt M6×20 (GB/T5787)	螺栓 M6X20	
8	170/178/186	Stator Assem.	定子部件	
9	170/178/186	Retainer	压线板	
10	170/178/186	Bolt M6×12	螺栓M6*12	
11	170/178/186	Support of regulator	稳压器支架	
12	170/178/186	Bolt M6×14	法兰螺栓M6*14	
13	170/178/186	Regulator	稳压器	
14	170/178/186	Bolt M6×14	法兰螺栓M6*14	
15	170/178/186	Starting Motor Assem.	起动机	
16	170/178/186	Bolt M10×35	螺栓M10*35	
17	170/178/186	Spring Washer	弹垫圈10	
18	170/178/186	Flat Washer	平垫圈10	
19	170/178/186	Heterotypic bolt M10×16	异型螺栓M10*16	
20	170/178/186	Cover	起动机机孔盖板	



**Fig.10 Recoil Starting System**

NO.	MODEL	English Description	Chinese Description	price(RMB)
1	170	recoil start assembly	170手拉盘总成	
	178	recoil start assembly	178手拉盘总成	
	186	recoil start assembly	186手拉盘总成	
1S	170FS	recoil start assembly	170FS手拉盘总成	
	178FS	recoil start assembly	178FS手拉盘总成	
	186FS	recoil start assembly	186FS手拉盘总成	
2	170/178/186	Bolt M6×8 (GB5789)	异型螺栓 M6X8	
3	170	Recoil starter rope	170起动手绳	
	178	Recoil starter rope	178起动手绳	
	186	Recoil starter rope	186起动手绳	
4	170	Recoil starter handle	170起动手柄	
	178/186	Recoil starter handle	178/186起动手柄	
5	170	Flat spiracle spring	170平面蜗卷弹簧	
	178	Flat spiracle spring	178平面蜗卷弹簧	
	186	Flat spiracle spring	186平面蜗卷弹簧	
6	170	Recoil reel	170起动手盘	
	178	Recoil reel	178起动手盘	
	186	Recoil reel	186起动手盘	
7	170	Starting claw	170起动手爪	
	178/186	Starting claw	178/186起动手爪	
8	170	Helical spring	170压缩弹簧	
	178/186	Helical spring	170/178压缩弹簧	
9	170	Torsional spring	170扭转弹簧	
	178/186	Torsional spring	178/186扭转弹簧	
10	170	Starting claw plate	170起动手爪压板	
	178/186	Starting claw plate	178/186起动手爪压板	
11	170	Friction plate	170摩擦片	
	178/186	Friction plate	178/186摩擦片	
12	170	Friction plate gasket	170摩擦片垫圈	
	178/186	Friction plate gasket	178/186摩擦片垫圈	
13	170/178/186	Nut M8 (GB6170)	螺母M8	
14	170	Wind leading case welded	170导风罩	
	178	Wind leading case welded	178导风罩	
	186	Wind leading case welded	186导风罩	
	188	Wind leading case welded	188导风罩	
	170FS	Wind leading case welded	170FS导风罩	
	178FS	Wind leading case welded	178FS导风罩	
15	170/178/186	Bolt M6×22 (GB5783)	螺栓 M6X22	
16	170/178/186	Big washer M6	加大平垫 Φ6	
17	170/178/186	Collar of Wind leading case welded	导风罩衬套	
18	170/178/186	Shock absorber	导风罩减振套	
19	170/178/186	Shock pads	减振垫条	

